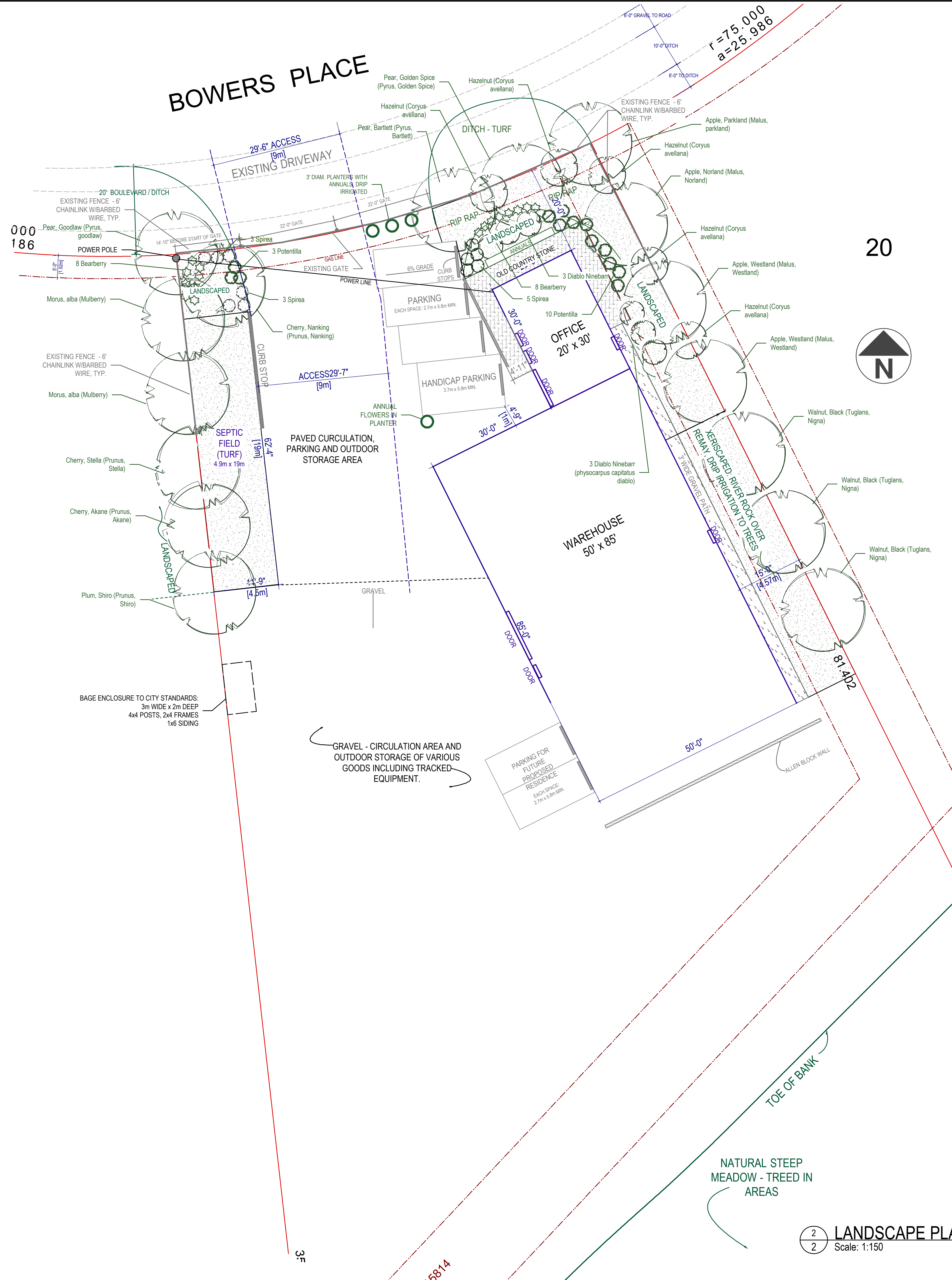


1 SITE PLAN  
Scale: 1:1000



PLANT MATERIAL		Quantity	Container	Size (H) (C) (Caliper) (cm)	Height (ft)	Spread (ft)	Comments
<b>TREES</b>							
Morus, alba	Mulberry tree			3.0m	9-12m	10-12m	
Malus, parkland	Apple, Parkland			15-23m	4.6-6m	4.6-6m	
Malus, norland	Apple, Norland			15-23m	4.6-6m	4.6-6m	
Malus, westland	Apple, Westland			15-23m	4.6-6m	4.6-6m	
Pyrus, golden spice	Pear, Golden Spice			15-23m	4.6-6m	4.6-6m	
Pyrus, bartlett	Pear, Bartlett			15-23m	4.6-6m	4.6-6m	
Pyrus, goodlaw	Pear, Goodlaw			15-23m	4.6-6m	4.6-6m	
Prunus, stella	Cherry, Stella			15-23m	4.6-6m	4.6-6m	
Prunus, akane	Cherry, Akane			15-23m	4.6-6m	4.6-6m	
Prunus, nanking	Cherry, Nanking			15-23m	4.6-6m	4.6-6m	
Prunus, brookred	Plum, Brookred			15-23m	4.6-6m	4.6-6m	
Prunus, shiro	Plum, Shiro			15-23m	4.6-6m	4.6-6m	
Tuglans, niga	Walnut, Black	250m		12-18m	12-18m	12-18m	
Tuglans, regia	Walnut, English	3,00m		12-18m	12-18m	12-18m	
<b>SPIRAEAS &amp; OTHER PERENNIALS</b>							
Spiraea japonica	Spiraea	1,000 post		1m	1m	1m	
	Anthony waterer	1,000 post		1m	1m	1m	
	Little Princess	1,000 post		1m	1m	1m	
Potentilla	Potentilla Fruticosa	1,000 post		1m	1m	1m	
	Katherine Dyles	1,000 post		1m	1m	1m	
	Pink Beauty	1,000 post		1m	1m	1m	
Hemerocallis	Daylily						
Physocarpus capitatus	Diablo Ninebarr	3,000 post		15-24m	12-18m		
Arctostaphylos uva-urina	Bearberry	1,000 post		1m wide	oregona		
Corylus avellana	Hazelnut	1,000 post		24-3m	24-3m		

**LANDSCAPE NOTES:**

- 1) VEGETATION TO BE IRRIGATED BY DRIP IRRIGATION, AS DESIGNED BY CONTRACTOR
- 2) CONCRETE PAVERS ARE TO BE INSTALLED ON 2" SOFT SAND ON 6" COMPACTED ROAD BASE ON COMPACTED GROUND
- 3) ALL TREES, SHRUBS, PERENNIALS AND ANNUALS TO BE PLANTED AND IRRIGATED ACCORDING TO INSTRUCTIONS RECEIVED FROM NURSERY.

2 LANDSCAPE PLAN  
Scale: 1:150

	2234 MALAVIEW AVE SIDNEY, BC V8L 2E7 PH: 250.656.8806 cumming.design@shaw.ca	DWG NO: <b>2 OF 5</b>	SCALE: SEE DWG'S	<b>Crossroads Storage</b> 2853 Bowers Place, Kamloops, B.C., V1S-1W5 PH: 377-8269 (Office) E-mail: shaen1@telus.net
	DRAWN BY: <b>TARA</b>	DATE: November 8th, 2006		